



## Raleigh Gardens, Brixton, SW2

1 bedroom flat - conversion for sale

**£475,000**

Share of Freehold

### Property Details

A wonderfully spacious one double bedroom garden flat nestled within one of Brixton's most sought-after residential pockets. At the front of the property is a wonderfully spacious reception room, a fantastic room with an abundance of natural light and original features, including high ceilings, original flooring, a feature fireplace, and a stunning bay window. Adjacent is the large double bedroom, with direct access onto the private rear garden. Down the tiled hallway there is access to a spacious cellar. To the rear of the property is the eat-in kitchen with great dimensions, space for a dining table, providing the ideal hub in which to dine and entertain. A functional bathroom completes the rooms within the property, benefitting from a lovely sash window. Last but not least, the secluded, south-east facing private garden has plenty of potential and feels incredibly peaceful. The flat is a complete blank canvas, ready for a purchaser to completely renovate over time, resulting in a home that is exactly to their own personal taste.

### Features

- One double bedroom
- Victorian conversion
- Characterful features
- Over 830 square feet of internal living space
- Development potential (STPP)
- Cellar
- Set back quietly from Brixton Hill on a private road
- Share of freehold
- Chain-free

Council tax band D    EPC rating (null)





## 1 Bedroom Flat

Approx internal area:

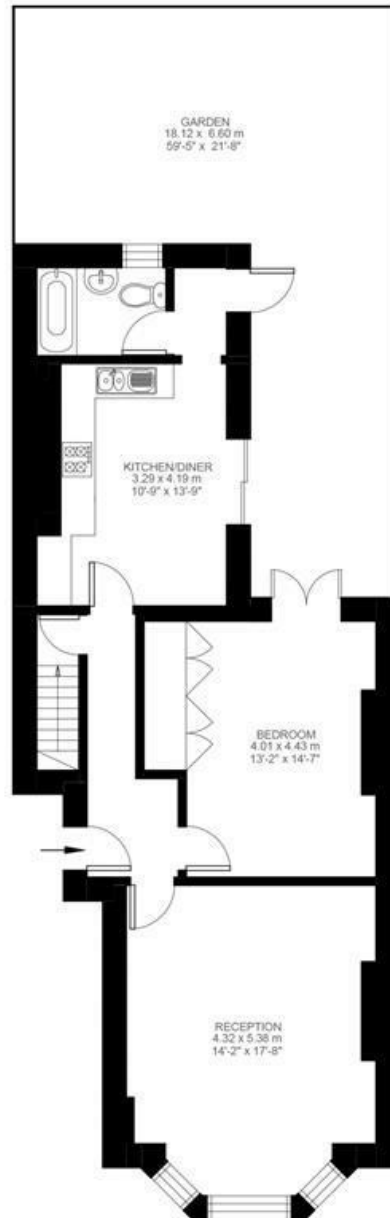
**839 sqft 78 sqm**

While we do try our very best, floor plans are produced as a guide only and we take no responsibility for the precise accuracy with which any property is represented

## Raleigh Gardens



Lower Ground Floor



Ground Floor



Raleigh Gardens, Brixton, SW2

